

Installation Manual

**CRITICAL INFORMATION PLEASE
READ BEFORE ASSEMBLY AND
INSTALLATION**

Belt Drive Garage Door Opener

Models B4545 B6765

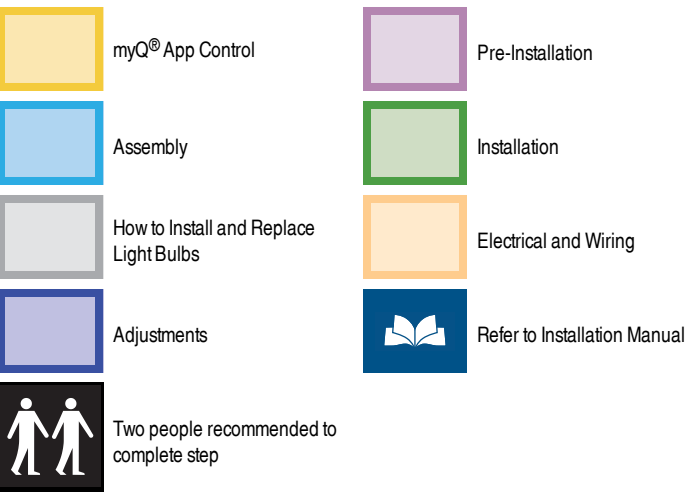
Go to chamberlain.com/belt-install to see installation videos.

- Fasten the manual near the garage door after installation.
- The door WILL NOT CLOSE unless the Protector System[®] is connected and properly aligned.
- Periodic checks of the garage door opener are required to ensure safe operation.
- DO NOT INSTALL on one-piece door if using devices or features providing unattended close. Unattended devices and features are to be used ONLY with sectional doors.

UNATTENDED OPERATION

The Timer-to-Close (TTC) feature, the myQ[®] App, and myQ[®] Garage Door and Gate Monitor are examples of unattended close and are to be used ONLY with sectional doors. Any device or feature that allows the door to close without being in the line of sight of the door is considered unattended close. The Timer-to-Close (TTC) feature, the myQ[®] App, and any other myQ[®] devices are to be used ONLY with sectional doors.

LEGEND



SAFETY SYMBOL REVIEW AND SIGNAL WORD REVIEW

This garage door opener has been designed and tested to offer safe service provided it is installed, operated, maintained and tested in strict accordance with the instructions and warnings contained in this manual.

When you see these Safety Symbols and Signal Words on the following pages, they will alert you to the possibility of **serious injury or death** if you do not comply with the warnings that accompany them. The hazard may come from something mechanical or from electric shock. Read the warnings carefully.

When you see this Signal Word on the following pages, it will alert you to the possibility of damage to your garage door and/or the garage door opener if you do not comply with the cautionary statements that accompany it. Read them carefully.

WARNING



Mechanical

WARNING



Electrical

CAUTION



WARNING: This product can expose you to chemicals including lead, which are known to the State of California to cause cancer or birth defects or other reproductive harm. For more information go to www.P65Warnings.ca.gov

CHECK THE DOOR

WARNING

To prevent possible **SERIOUS INJURY** or **DEATH**:

- ALWAYS call a trained door systems technician if garage door binds, sticks, or is out of balance. An unbalanced garage door may NOT reverse when required.
- NEVER try to loosen, move or adjust garage door, door springs, cables, pulleys, brackets or their hardware, ALL of which are under **EXTREME** tension.
- Disable ALL locks and remove ALL ropes connected to garage door **BEFORE** installation and operating garage door opener to avoid entanglement.
- DO NOT install on a one-piece door if using devices or features providing unattended close. Unattended devices and features are to be used ONLY with sectional doors.

CAUTION

To prevent damage to garage door and opener:

- ALWAYS disable locks **BEFORE** installing and operating the opener.
- ONLY operate garage door opener at 120V, 60 Hz to avoid malfunction and damage.

Before you begin:

- Disable locks and remove any ropes connected to the garage door.
- Lift the door halfway up. Release the door. If balanced, it should stay in place, supported entirely by its springs.
- Raise and lower the door to check for binding or sticking. If your door binds, sticks, or is out of balance, call a trained door systems technician.
- Check the seal on the bottom of the door. Any gap between the floor and the bottom of the door must not exceed 1/4" (6 mm). Otherwise, the safety reversal system may not work properly.
- The opener should be installed above the center of the door. If there is a torsion spring or center bearing plate in the way of the header bracket, it may be installed within 4 feet (1.2 m) to the left or right of the door center.

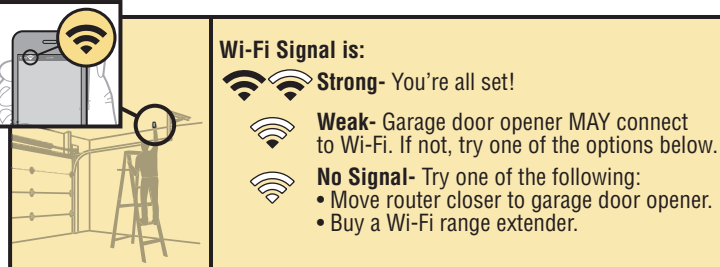
myQ[®] APP CONTROL

Open and close your garage door from your smartphone. Get alerted any time your garage opens, closes or is left open. Set a schedule for your garage to close at a certain time. Connected smart garage door openers also receive software updates to ensure the opener has the latest operational features.

TEST WI-FI[®] SIGNAL

You will need a router with Wi-Fi and a smartphone or other mobile device. Make sure your mobile device is connected to your Wi-Fi network. Hold your mobile device in the place where your garage door opener will be installed and check the Wi-Fi signal strength.

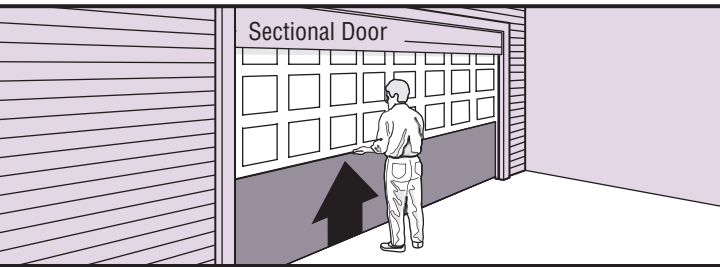
HOW STRONG IS YOUR WI-FI SIGNAL?



- Strong** - Continue to Check Door.
- Weak** - If garage door opener does not connect, try options for no signal.
- No Signal** - Move router or install a Wi-Fi range extender.

PRE-INSTALLATION CHECKLIST

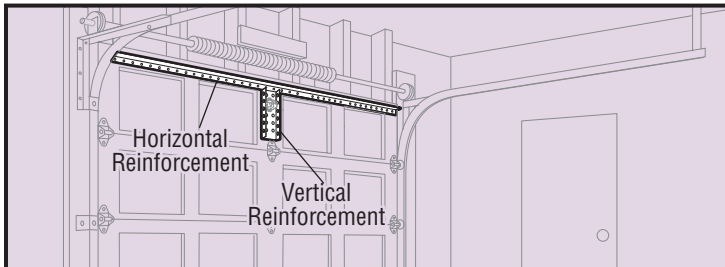
CHECK DOOR



Lift the door halfway up. Release the door. If balanced, it should stay in place. Raise and lower the door to check for binding or sticking. Is your door balanced and is it free from binding or sticking?

- Yes** - Continue to **Door Reinforcement**.
- No** - Contact a trained door systems technician.

DOOR REINFORCEMENT

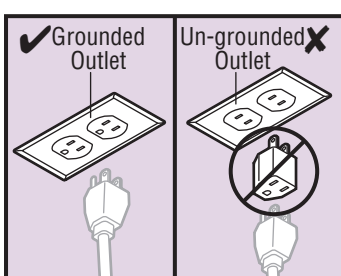


Verify the door has adequate support. Horizontal and vertical reinforcements (not provided) are needed for lightweight garage doors (fiberglass, aluminum, steel, doors with glass panel, etc.). A horizontal reinforcement brace should be long enough to be secured to two or three vertical supports. A vertical reinforcement brace should cover the height of the top panel.

Is the garage door reinforced?

- Yes** - Continue to **Door Height**.
- No** - Lightweight garage doors REQUIRE reinforcement. Contact the garage door manufacturer or installing dealer for opener reinforcement instructions or reinforcement kit.

POWER CONNECTIONS



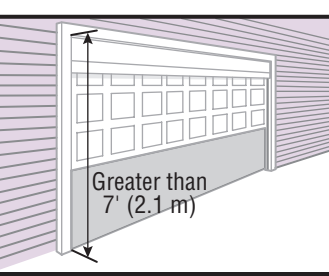
Do you have a grounded outlet?

- Yes** - Continue to **ASSEMBLY**.
- No** - Call an electrician. **DO NOT** use an extension cord.

If the plug doesn't fit into the outlet you have, contact a qualified electrician to install the proper outlet.

If permanent wiring is required by your local code, see the Installation Options in the Owner's Manual.

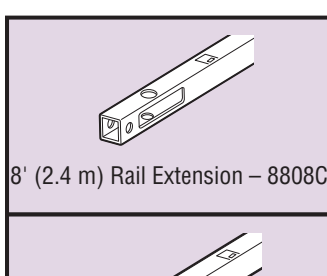
DOOR HEIGHT



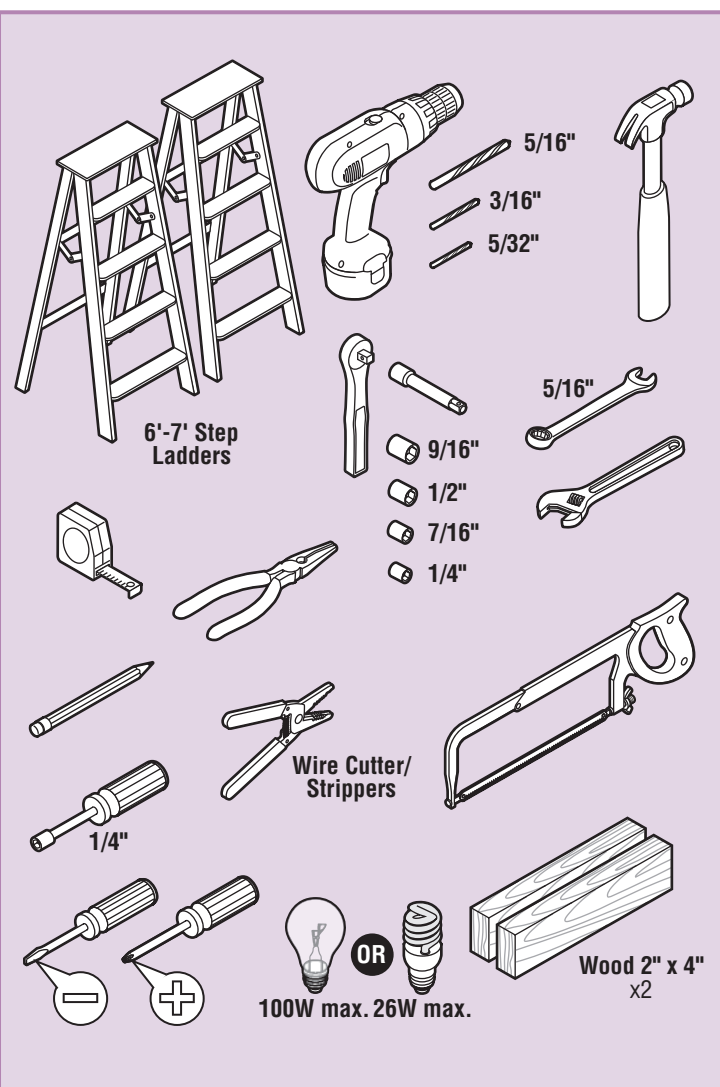
Is door taller than 7' (2.1 m)?

- Yes** - You will need a rail extension kit.
- No** - Continue to **Power Connections**.

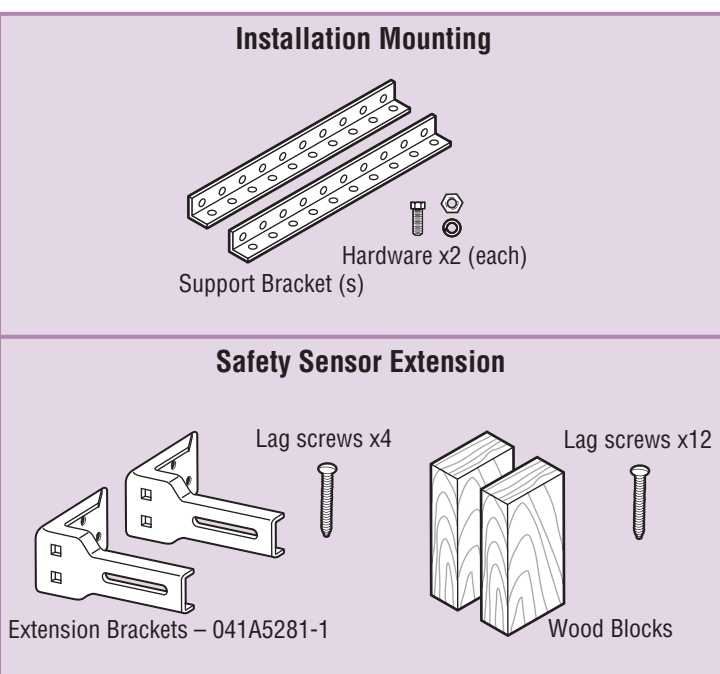
Rail Extension Kits (sold separately)



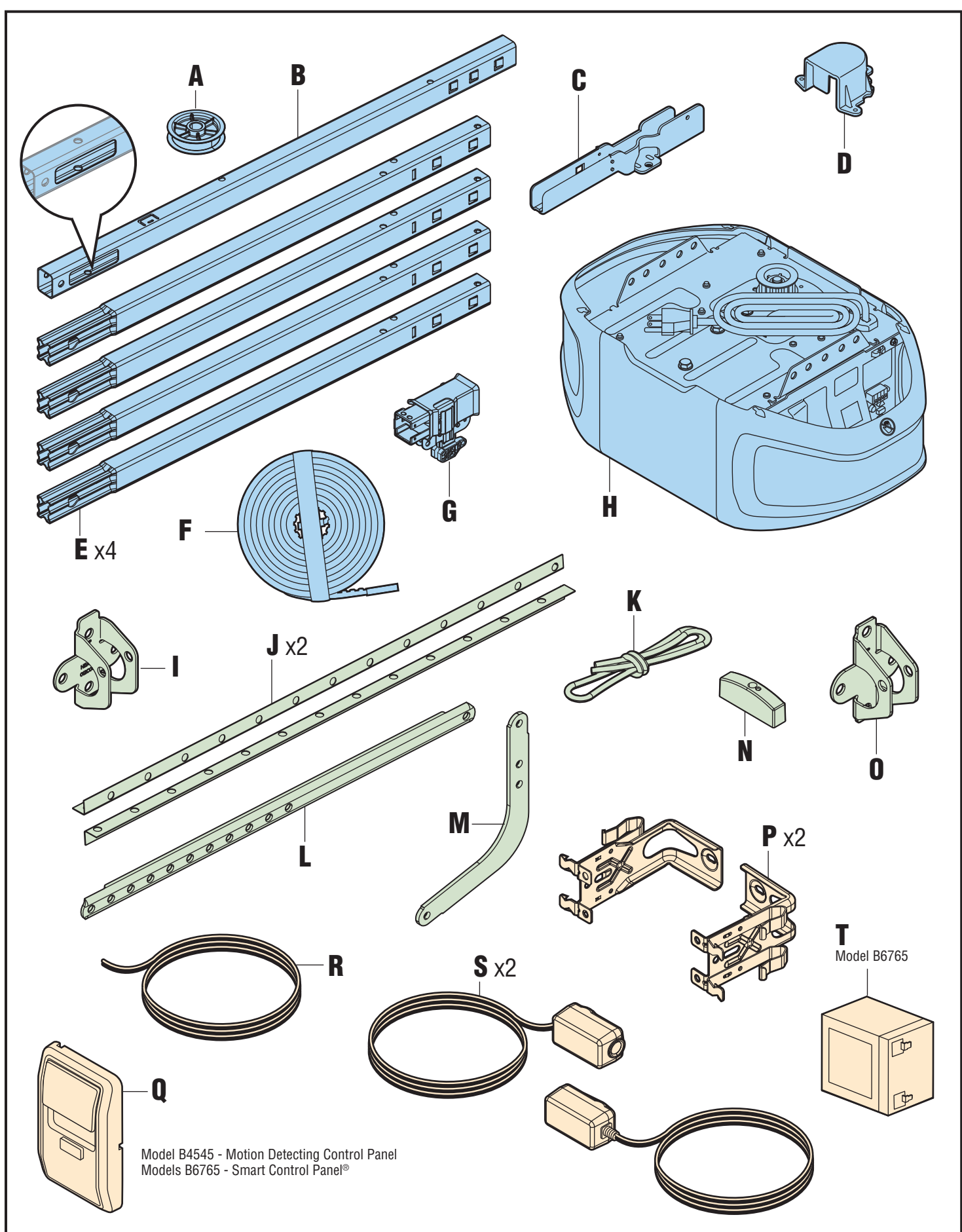
TOOLS REQUIRED



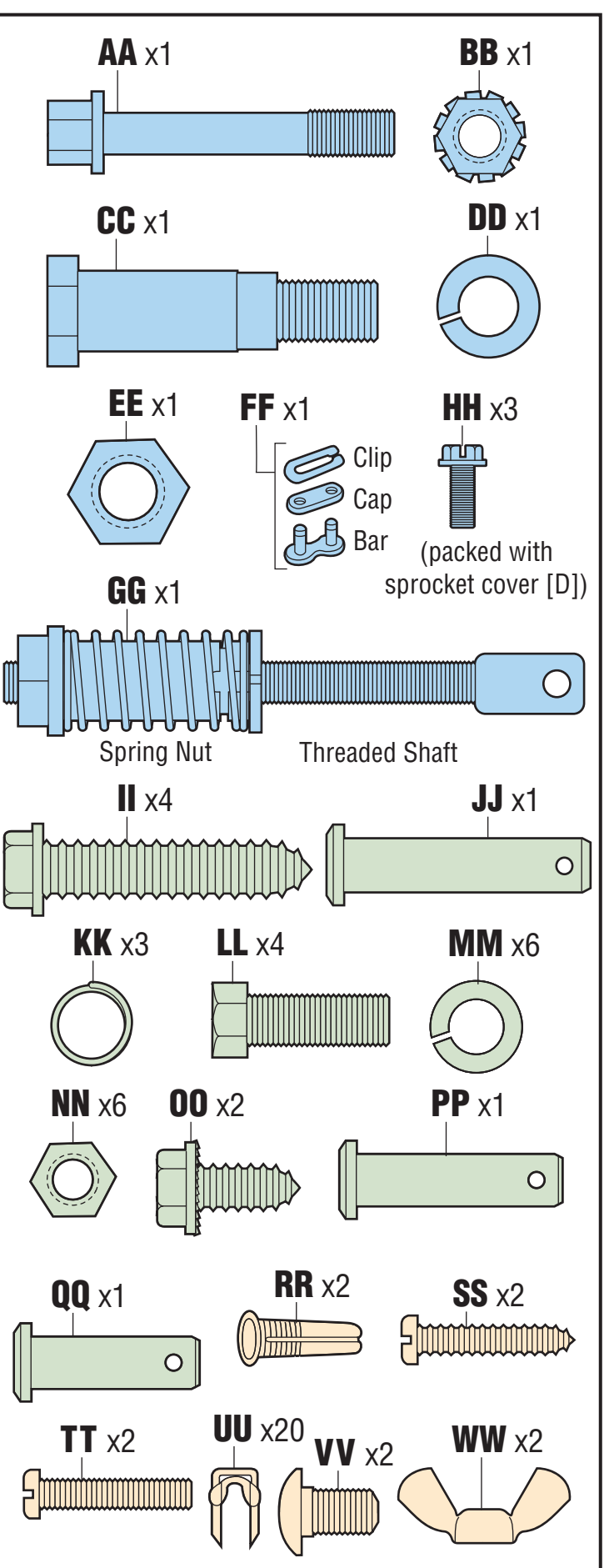
ITEMS THAT MAY BE NEEDED



PACKAGE CONTENTS

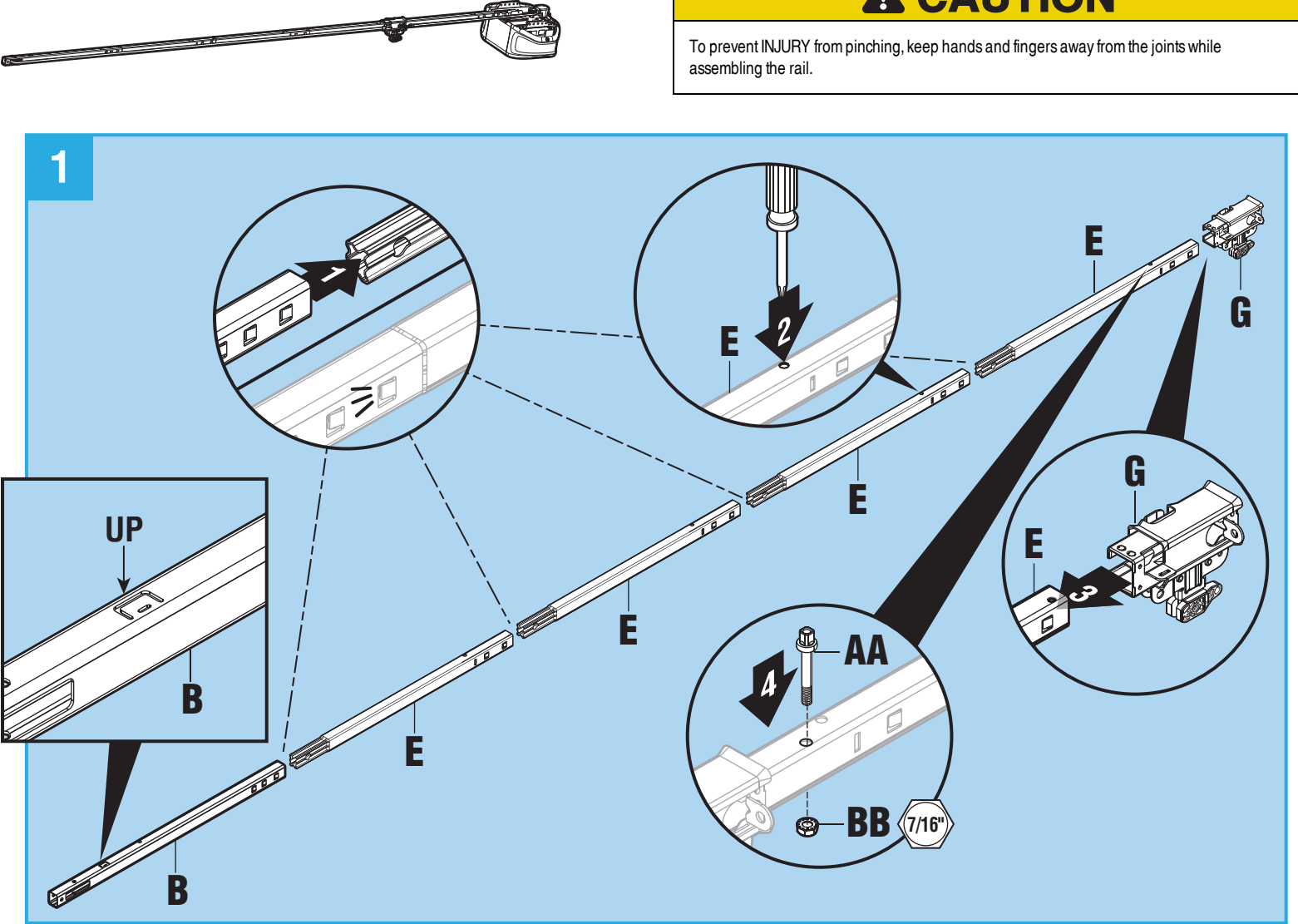


HARDWARE

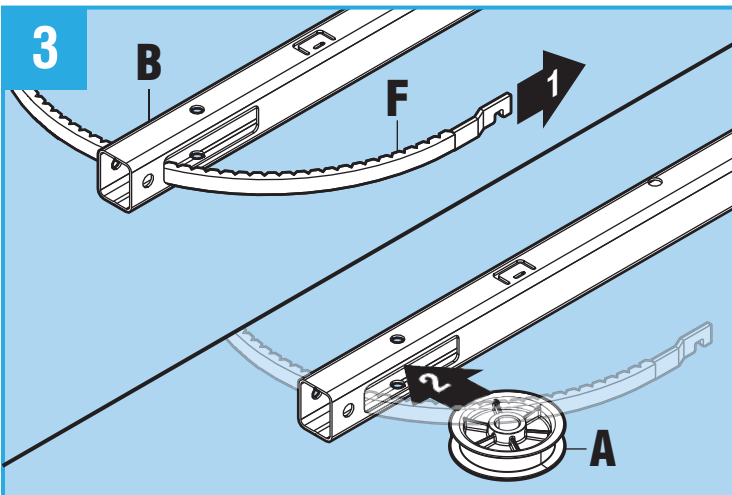


ASSEMBLY

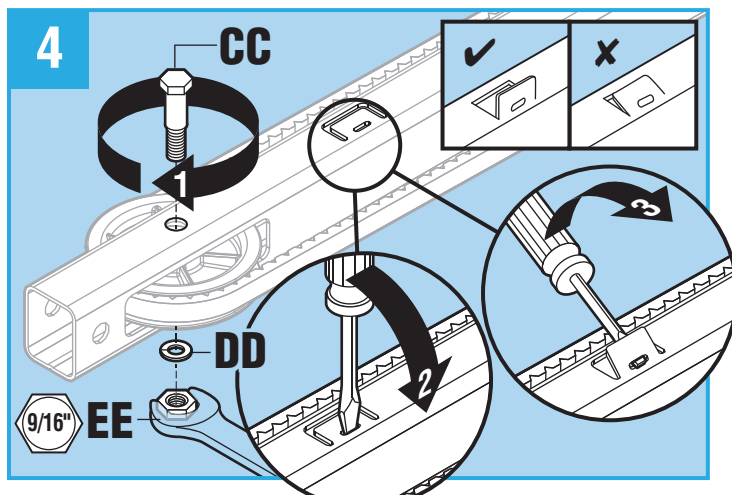
After completion of the following steps, unit should look like this.



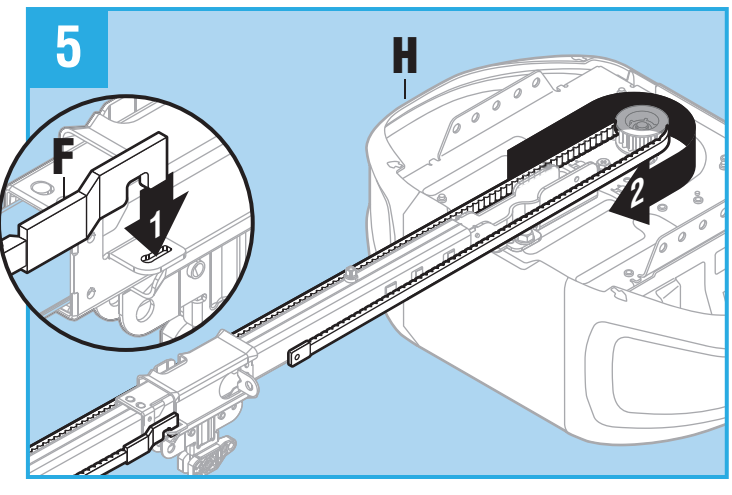
1. Assemble the front rail (B) to center rail (E). Assemble three remaining center rails to railing assembly. It may require some effort (such as rubber mallet) to snap rails into place. 2. Insert a screwdriver into the hole on second to last center rail (E). This will provide a temporary stop for the trolley (G). 3. Slide the trolley (G) onto the last center rail (E). 4. Insert bolt (AA) into the hole on the last center rail. Using a 7/16\"/>



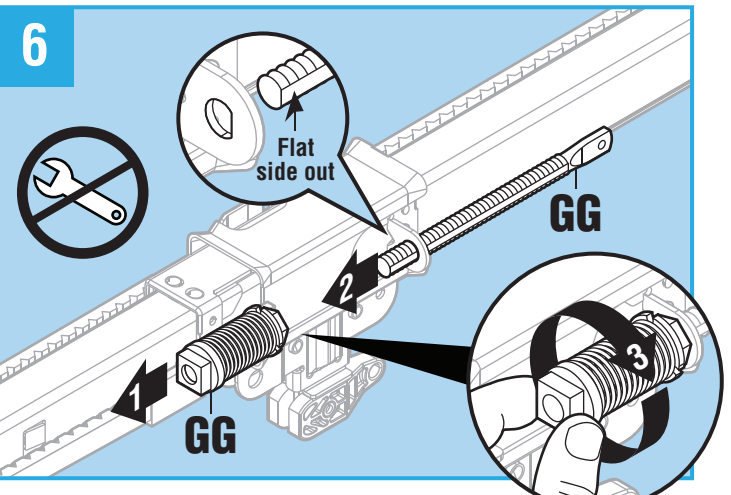
1. Insert belt (F) through front rail (B) then 2. insert idler pulley (A).



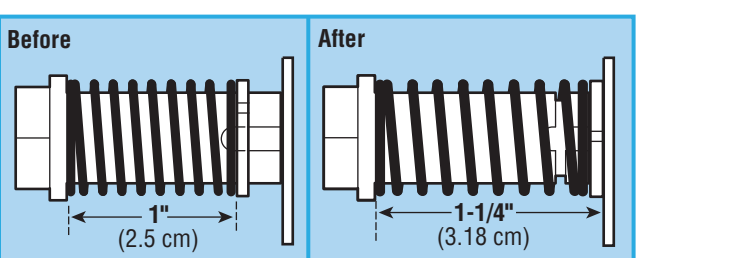
1. Using a 9/16\"/>



1. Attach trolley connector on end of belt (F) to the trolley (G). 2. Feed the other end of the belt around the sprocket on opener (H), making sure the sprocket teeth engage the belt.



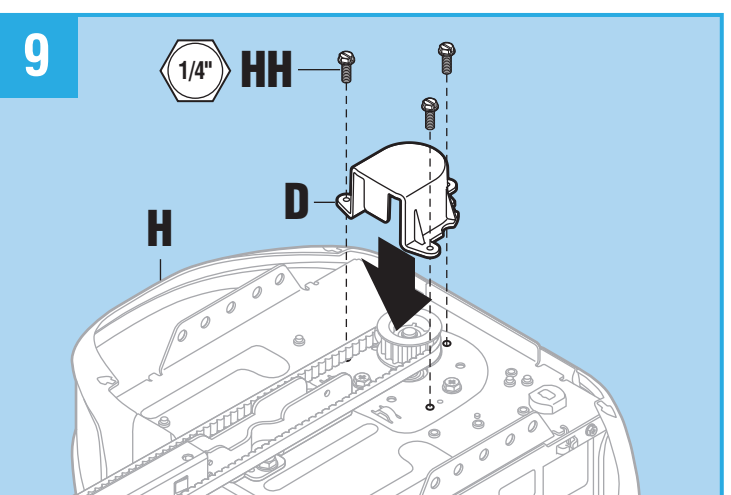
1. Remove spring nut from threaded shaft (GG). 2. Insert threaded shaft through the hole in the trolley (G) and 3. hand tighten spring nut onto threaded shaft only enough to hold the shaft in place.



WARNING

To avoid possible **SERIOUS INJURY** to finger from moving garage door opener:

- ALWAYS keep hand clear of sprocket while operating opener.
- Securely attach sprocket cover **BEFORE** operating.



Using a screwdriver or 1/4\"/>

INSTALLATION

IMPORTANT INSTALLATION INSTRUCTIONS

WARNING

To reduce the risk of **SEVERE INJURY** or **DEATH**:

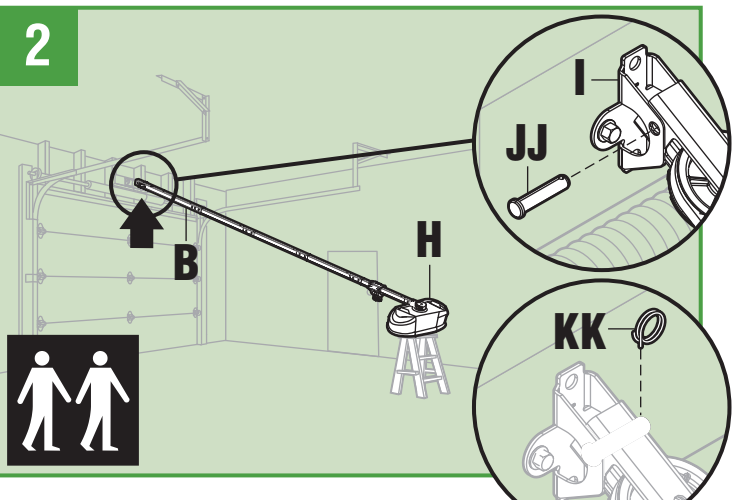
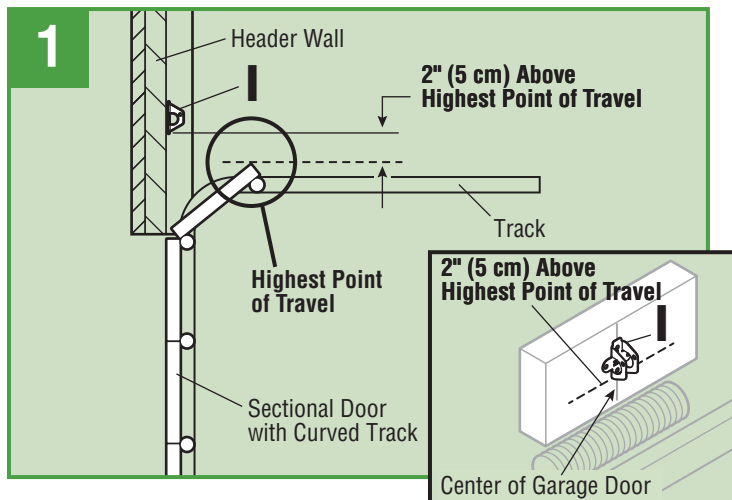
- READ AND FOLLOW ALL INSTALLATION WARNINGS AND INSTRUCTIONS.
- Install garage door opener ONLY on properly balanced and lubricated garage door. An improperly balanced door may NOT reverse when required and could result in **SEVERE INJURY** or **DEATH**.
- ALL repairs to cables, spring assemblies and other hardware MUST be made by a trained door systems technician **BEFORE** installing opener.
- Disable ALL locks and remove ALL ropes connected to garage door **BEFORE** installing opener to avoid entanglement.
- Where possible, install the door opener 7 feet (2.13 m) or more above the floor.
- Mount the emergency release within reach, but at least 6 feet (1.83 m) above the floor and avoiding contact with vehicles to avoid accidental release.
- NEVER connect garage door opener to power source until instructed to do so.
- NEVER wear watches, rings or loose clothing while installing or servicing opener. They could be caught in garage door or opener mechanisms.
- Install wall-mounted garage door control:
 - within sight of the garage door;
 - out of reach of small children at a minimum height of 5 feet (1.5 m) above floors, landings, steps or any other adjacent walking surface;
 - away from ALL moving parts of the door.
- Place entrapment warning label on wall next to garage door control in a prominent location.
- Disable emergency release/reversal test label in plain view on inside of garage door.
- Upon completion of installation, test safety reversal system. Door MUST reverse on contact with a 1-1/2\"/>
- DO NOT install on a one-piece door if using devices or features providing unattended close. Unattended devices and features are to be used ONLY with sectional doors.

14. SAVE THESE INSTRUCTIONS.

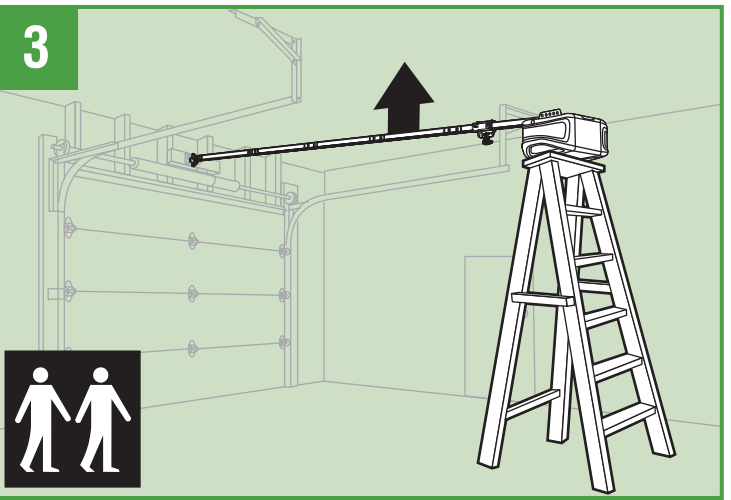
If you are replacing a LiftMaster[®] Chamberlain[®] or Craftsman[®] garage door opener you may use the existing header bracket. Verify the bracket is in the correct location:

- The bracket is securely fastened to a structural support.
- The bracket is centered to the door.
- The bottom edge of the bracket is 2\"/>

To install the provided header bracket, see Installation step 1 in the User's Guide.



Place opener (H) on a protective base (i.e. cardboard, stool, etc.) and lift front rail (B) up towards header bracket. Attach front rail to header bracket (I) with 1-1/2\"/>



Lift garage door opener onto a ladder.

